



**Tough Portables | Series 100**



**G110**  
Our most powerful portable unit with a 6" X 10' fume arm.



**G112**  
Like our G110, with a 6" flex hose and cone intake.



**G120**  
Portable unit with flexibility, change from an extra-large 8" fume arm or dual 6" arms, to a back draft or a down draft table with 1200 CFM.



**G121**  
Our top of the line portable, with two 6" x 10' fume arms powerful enough for 1200 CFM.



**G122**  
Powerful and unique with the option to transition from back draft to down draft in minutes with 1200 CFM.



**G130**  
A versatile unit with source capture includes tip extraction for welding and a 2" X 15' flex hose with additional intake attachments.

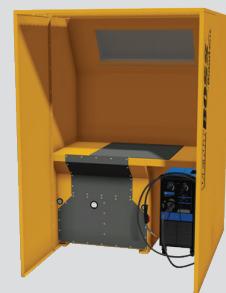
**Plug-N-Play Workstations | Series 200**



**S210-/S211 | Down Draft Table**  
Welding down draft table with convenient built in filtration.



**S220 | Cross Flow Table**  
An all-in-one welding booth featuring plug-in-play, ideal for welding schools and training facilities.



**S230 | Cross Flow Table**  
A powerful back draft extraction table pulls weld fumes up and away from the operator.



**Space Saver Units | Series 300**



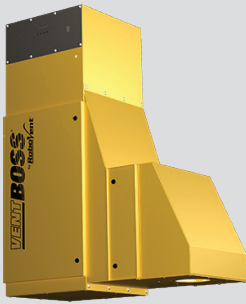
**S310 | Floor Mount Space Saver Unit**  
Customizable, base unit with the flexibility to hook up to ductwork.



**S311 | with 8" x 10' Fume Arm**  
**S312 | with 8" x 14' Fume Arm**  
Single or double fume arm units tough enough for manual welding situations with 1500 CFM.



**S313 | with (2) 6" x 10' Fume Arms**  
**S314 with (2) 6" x 14' Fume Arms**  
Single or double arm units for manual welding with 1500 CFM of smoke capturing power.



**S315 | Wall Mount Space Saver Unit**  
A customizable base unit with the flexibility to hook-up to ductwork or wherever you need it.



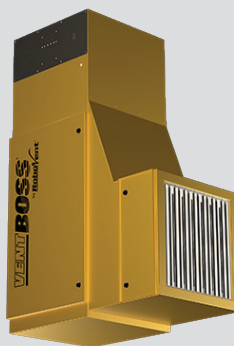
**S316 | with 8" x 10' Fume Arm**  
**S317 | with 8" x 14' Fume Arm**  
Single or double arm unit for manual welding with 1500 CFM of smoke capturing power.



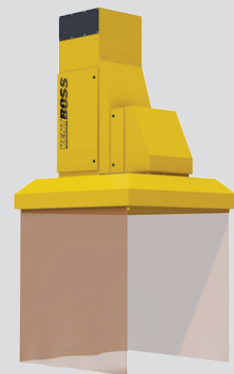
**S318 | with (2) 6" x 10' Fume Arms**  
**S319 | with (2) 6" x 14' Fume Arms**  
Dual arm configurations, ideal over 2 manual welding areas or stations for a plug-in-play solution.



**S320 | Floor Mount Space Saver Backdraft Unit**  
The most effective method of filtration, place this unit behind your welding area to pull smoke and fumes away from the operators breathing zone.



**S321 | Wall Mount Space Saver Backdraft Unit**  
Wall/ceiling mountable unit, place this unit behind your welding area to pull smoke and fumes away from the operators breathing zone.



**S350 | Wall Mount Space Saver Canopy**  
Wall/ceiling mountable unit place over your welding area or a parts bin for effective overhead filtration.